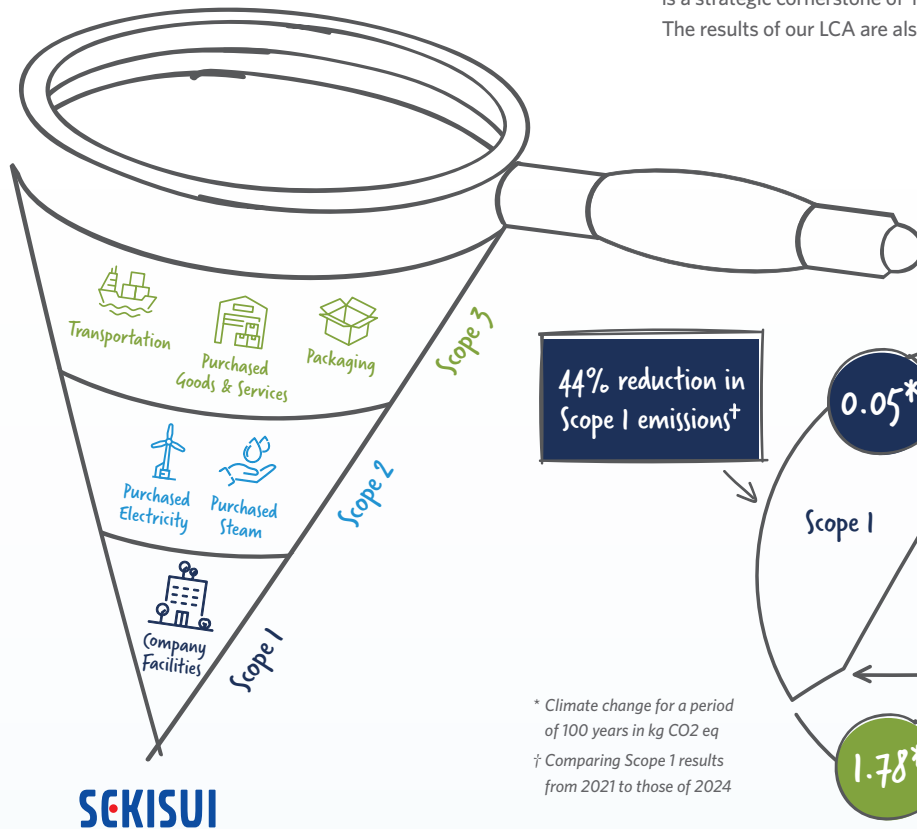


2025 By-Product Allocated Addendum

Methyl acetate and acetic acid are by-products of the Sekisui Specialty Chemicals (SSC) PVOH production process. Both methyl acetate and acetic acid can be produced using more efficient, standard pathways in the chemical industry than those of SSC's. For this reason, SSC has elected to report primary results with 100% carbon allocation to PVOH. However, to provide complete transparency to our stakeholders, SSC is also providing secondary results with the alternative assumption that carbon is allocated to both PVOH and by-products.

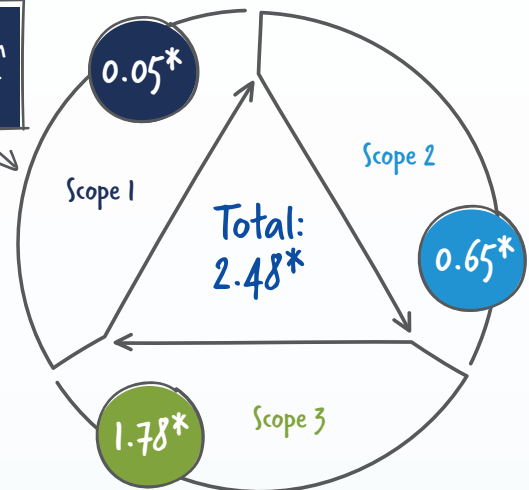
The LCA was performed in accordance with ISO 14040 and ISO 14044. The first step in the LCA process was to calculate the energy and raw material inputs and air emissions, water effluents, and solid waste outputs based on polymer production. This LCA was calculated in 2025 with data from 2024, and represents data collected from all three SSC manufacturing plants.

The report is also aligned with the PCF (Product Carbon Footprint Guideline for the Chemical Industry) guideline created by TFS (Together for Sustainability V3.0) initiative. As per PCF guideline, "a major share of the industry's greenhouse gas (GHG) emissions arises from the upstream value chain (scope 3). Increasing data transparency and accuracy on the product-level is a key element to drive emission reductions along the value chain and is a strategic cornerstone of many corporate climate mitigation strategies." The results of our LCA are also GHG Protocol compliant for Scope 3.



Simapro software was used to calculate the LCA results, and the final report has been independently, 3rd party verified.

44% reduction in Scope 1 emissions†



* Climate change for a period of 100 years in kg CO2 eq
 † Comparing Scope 1 results from 2021 to those of 2024

The Results

We look forward to sharing the results with our customers to help them achieve their sustainability goals for future products. The results of the analysis included the following topics:

- Stratospheric ozone depletion (kg CFC-11 eq.)
- Ozone formation, human health (kg NOx eq)
- Fine particulate matter formation (kg PM2.5 eq)
- Ozone formation, terrestrial ecosystems (kg NOx eq)
- Terrestrial acidification (kg SO2 eq)
- Freshwater eutrophication (kg P eq)
- Marine eutrophication (kg N eq)
- Water consumption (m3)

For more information about specific data for the calculated impact categories, please contact your local Sekisui representative.

All provided results in this flyer are based on 1 kg of Selvol PVOH production, the average of all three plants, and allocated between the main product, Selvol PVOH and by-products.

For non-allocated values, please see the main LCA Results.

